

COMBINED NEEDLE ROLLER BEARINGS

WITH AXIAL BALL BEARINGS WITHOUT INNER RINGS



NKX

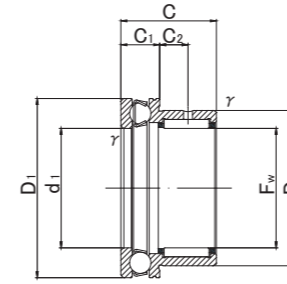
NKX.Z



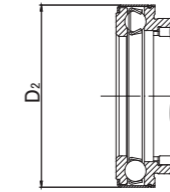
NKX



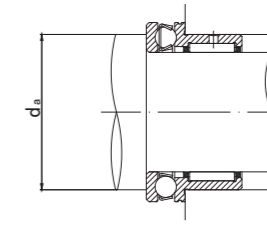
NKX.Z



NKX



NKX.Z



NKX, NKX.Z TYPE

Shaft diameter (mm)	Designation		Dimensions (mm)									Standard mounting dimensions (mm)	Basic dynamic load rating		Basic static load rating		Limiting speed *	Mass	Usable bearing designation	
	Open type	With dust cover											Radial	Axial	Radial	Axial			INNER RING	WITH INNER RING
	Grease pre-packed in thrust section		Fw	D	D1	D2	C	C1	C2	rs min	d1		da MIN	Cr N	Cor N	rpm			g (approx.)	
10	NKX10	—	10 +0.022	19	24	—	23	9	6.5	0.3	10	18	8 200	10 000	9 200	14 000	9 500	36	IR71016	NKXI 7
	—	NKX10Z	10 +0.013	19	—	25	23	9	6.5	0.3	10		18	8 200	10 000	9 200			14 000	9 500
12	NKX12	—	12 +0.027	21	26	—	23	9	6.5	0.3	12	20	9 200	10 300	11 200	15 400	9 200	40.5	IR91216	NKXI 9
	—	NKX12Z	12 +0.016	21	—	27	23	9	6.5	0.3	12		20	9 200	10 300	11 200			15 400	9 200
15	NKX15	—	15 +0.027	24	28	—	23	9	6.5	0.3	15	23	12 400	10 500	14 900	16 800	8 800	44	IR121516	NKXI 12
	—	NKX15Z	15 +0.016	24	—	29	23	9	6.5	0.3	15		23	12 400	10 500	14 900			16 800	8 800
17	NKX17	—	17 +0.027	26	30	—	25	9	8	0.3	17	25	12 800	10 800	16 300	18 200	8 500	52	IR141717	NKXI 14
	—	NKX17Z	17 +0.016	26	—	31	25	9	8	0.3	17		25	12 800	10 800	16 300			18 200	8 500
20	NKX20	—	20 +0.033	30	35	—	30	10	10.5	0.3	20	29	17 600	14 200	25 400	24 700	7 500	83	IR172020	NKXI 17
	—	NKX20Z	20 +0.020	30	—	36	30	10	10.5	0.3	20		29	17 600	14 200	25 400			24 700	7 500
25	NKX25	—	25 +0.033	37	42	—	30	11	9.5	0.6	25	35	20 000	19 600	32 200	37 300	6 500	124.5	IR202520	NKXI 20
	—	NKX25Z	25 +0.020	37	—	43	30	11	9.5	0.6	25		35	20 000	19 600	32 200			37 300	6 500
30	NKX30	—	30 +0.033	42	47	—	30	11	9.5	0.6	30	40	25 100	20 400	40 100	42 200	6 200	141.5	IR253020	NKXI 25
	—	NKX30Z	30 +0.020	42	—	48	30	11	9.5	0.6	30		40	25 100	20 400	40 100			42 200	6 200
35	NKX35	—	35 +0.041	47	52	—	30	12	9	0.6	35	45	27 000	20 400	46 200	44 700	5 600	163	IR303520	NKXI 30
	—	NKX35Z	35 +0.025	47	—	53	30	12	9	0.6	35		45	27 000	20 400	46 200			44 700	5 600
40	NKX40	—	40 +0.041	52	60	—	32	13	10	0.6	40	52	29 400	26 900	54 100	62 900	5 000	214	IR354020	NKXI 35
	—	NKX40Z	40 +0.025	52	—	61	32	13	10	0.6	40		52	29 400	26 900	54 100			62 900	5 000
45	NKX45	—	45 +0.041	58	65	—	32	14	9	0.6	45	57	31 100	27 900	60 100	69 200	4 600	251	IR404520	NKXI 40
	—	NKX45Z	45 +0.025	58	—	66.5	32	14	9	0.6	45		57	31 100	27 900	60 100			69 200	4 600
50	NKX50	—	50 +0.041	62	70	—	35	14	10	0.6	50	62	43 000	28 700	85 200	75 400	4 500	277	IR455025	NKXI 45
	—	NKX50Z	50 +0.025	62	—	71.5	35	14	10	0.6	50		62	43 000	28 700	85 200			75 400	4 500
60	NKX60	—	60 +0.049	72	85	—	40	17	12	1	60	75	47 500	41 400	103 000	113 000	3 700	443	IR506025	NKXI 50
	—	NKX60Z	60 +0.030	72	—	86.5	40	17	12	1	60		75	47 500	41 400	103 000			113 000	3 700
70	NKX70	—	70 +0.049	85	95	—	40	18	11	1	70	85	55 500	43 100	120 600	127 000	3 400	577	IR607025	NKXI 60
	—	NKX70Z	70 +0.030	85	—	96.5	40	18	11	1	70		85	55 500	43 100	120 600			127 000	3 400

* Suitable for oil lubrication. In case of grease lubrication, down to 70% of this value.