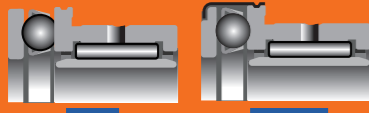


COMBINED NEEDLE ROLLER BEARINGS

WITH AXIAL BALL BEARINGS WITH INNER RINGS



NKXI

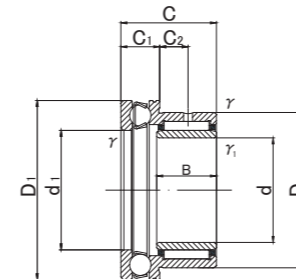
NKXI.Z



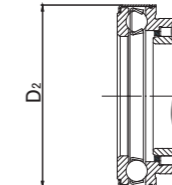
NKXI



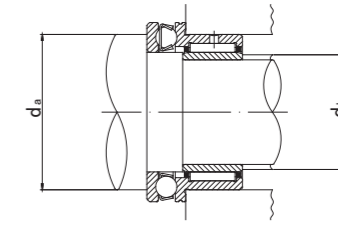
NKXI.Z



NKXI



NKXI.Z



NKXI, NKXI.Z TYPE

Shaft diameter (mm)	Designation		Dimensions (mm)										Standard mounting dimensions (mm)		Basic dynamic load rating		Basic static load rating		Limiting speed *	Mass	Usable bearing designation		
	Open type	With dust cover															rpm	g (approx.)			OUTER RING	INNER RING	
	Grease pre-packed in thrust section		d	D	D1	D2	B	C	C1	C2	r _s min	r _{s1} min	d1	da MIN	db	Cr N							Cor N
7	NKXI 7	—	7 ₀	19	24	—	16	23	9	6.5	0.3	0.3	10	18	9	8 200	10 000	9 200	14 000	9 500	41	NKX10	IR71016
	—	NKXI 7Z	7 _{-0.008}	19	—	25	16	23	9	6.5	0.3	0.3	10	18	9	8 200	10 000	9 200	14 000	9 500	42.5	NKX10Z	IR71016
9	NKXI 9	—	9 ₀	21	26	—	16	23	9	6.5	0.3	0.3	12	20	11	9 200	10 300	11 200	15 400	9 200	46.5	NKX12	IR91216
	—	NKXI 9Z	9 _{-0.008}	21	—	27	16	23	9	6.5	0.3	0.3	12	20	11	9 200	10 300	11 200	15 400	9 200	48	NKX12Z	IR91216
12	NKXI 12	—	12 ₀	24	28	—	16	23	9	6.5	0.3	0.3	15	23	14	12 400	10 500	14 900	16 800	8 800	51.8	NKX15	IR121516
	—	NKXI 12Z	12 _{-0.008}	24	—	29	16	23	9	6.5	0.3	0.3	15	23	14	12 400	10 500	14 900	16 800	8 800	53.3	NKX15Z	IR121516
14	NKXI 14	—	14 ₀	26	30	—	17	25	9	8	0.3	0.3	17	25	16	12 800	10 800	16 300	18 200	8 500	61.5	NKX17	IR141717
	—	NKXI 14Z	14 _{-0.008}	26	—	31	17	25	9	8	0.3	0.3	17	25	16	12 800	10 800	16 300	18 200	8 500	63	NKX17Z	IR141717
17	NKXI 17	—	17 ₀	30	35	—	20	30	10	10.5	0.3	0.3	20	29	19	17 600	14 200	25 400	24 700	7 500	97	NKX20	IR172020
	—	NKXI 17Z	17 _{-0.008}	30	—	36	20	30	10	10.5	0.3	0.3	20	29	19	17 600	14 200	25 400	24 700	7 500	99.5	NKX20Z	IR172020
20	NKXI 20	—	20 ₀	37	42	—	20	30	11	9.5	0.6	0.3	25	35	24	20 000	19 600	32 200	37 300	6 500	151.5	NKX25	IR202520
	—	NKXI 20Z	20 _{-0.010}	37	—	43	20	30	11	9.5	0.6	0.3	25	35	24	20 000	19 600	32 200	37 300	6 500	154.5	NKX25Z	IR202520
25	NKXI 25	—	25 ₀	42	47	—	20	30	11	9.5	0.6	0.3	30	40	29	25 100	20 400	40 100	42 200	6 200	174.5	NKX30	IR253020
	—	NKXI 25Z	25 _{-0.010}	42	—	48	20	30	11	9.5	0.6	0.3	30	40	29	25 100	20 400	40 100	42 200	6 200	178	NKX30Z	IR253020
30	NKXI 30	—	30 ₀	47	52	—	20	30	12	9	0.6	0.3	35	45	34	27 000	20 400	46 200	44 700	5 600	201.5	NKX35	IR303520
	—	NKXI 30Z	30 _{-0.010}	47	—	53	20	30	12	9	0.6	0.3	35	45	34	27 000	20 400	46 200	44 700	5 600	206	NKX35Z	IR303520
35	NKXI 35	—	35 ₀	52	60	—	20	32	13	10	0.6	0.3	40	52	39	29 400	26 900	54 100	62 900	5 000	260	NKX40	IR354020
	—	NKXI 35Z	35 _{-0.012}	52	—	61	20	32	13	10	0.6	0.3	40	52	39	29 400	26 900	54 100	62 900	5 000	266	NKX40Z	IR354020
40	NKXI 40	—	40 ₀	58	65	—	20	32	14	9	0.6	0.3	45	57	44	31 100	27 900	60 100	69 200	4 600	302	NKX45	IR404520
	—	NKXI 40Z	40 _{-0.012}	58	—	66.5	20	32	14	9	0.6	0.3	45	57	44	31 100	27 900	60 100	69 200	4 600	315.5	NKX45Z	IR404520
45	NKXI 45	—	45 ₀	62	70	—	25	35	14	10	0.6	0.6	50	62	49	43 000	28 700	85 200	75 400	4 500	348	NKX50	IR455025
	—	NKXI 45Z	45 _{-0.012}	62	—	71.5	25	35	14	10	0.6	0.6	50	62	49	43 000	28 700	85 200	75 400	4 500	362.5	NKX50Z	IR455025
50	NKXI 50	—	50 ₀	72	85	—	25	40	17	12	1	1	60	75	59	47 500	41 400	103 000	113 000	3 700	606	NKX60	IR506025
	—	NKXI 50Z	50 _{-0.012}	72	—	86.5	25	40	17	12	1	1	60	75	59	47 500	41 400	103 000	113 000	3 700	628.5	NKX60Z	IR506025
60	NKXI 60	—	60 ₀	85	95	—	25	40	18	11	1	1	70	85	68	55 500	43 100	120 600	127 000	3 400	772	NKX70	IR607025
	—	NKXI 60Z	60 _{-0.015}	85	—	96.5	25	40	18	11	1	1	70	85	68	55 500	43 100	120 600	127 000	3 400	796	NKX70Z	IR607025

* Suitable for oil lubrication. In case of grease lubrication, down to 70% of this value.