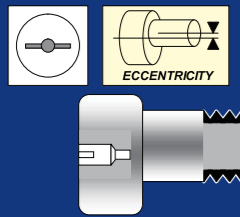


CAM FOLLOWERS

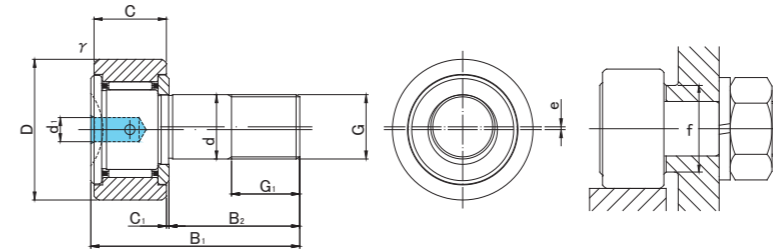
SOLID ECCENTRIC TYPE SCREWDRIVER SLOT HEAD



CFH



CFH.V



CFH TYPE

Prepacked Grease

Stud diameter (mm)	Designation	Dimensions (mm)											Basic dynamic load rating	Basic static load rating	Largest permissible load	Limiting speed *	Track load capacity		Max tightening torque	Mass				
		Cylindrical outer ring				Crowned outer ring R500				Eccentricity							Cylindrical outer ring N	Crowned outer ring N			N-m	g (approx)		
h7 tolerance	Without seals	With seals	Without seals	With seals	D	C	d	G	G1	B1	B2	C1	d1	r _s min	e	f min	Cr N	Cor N	N	rpm	Cylindrical outer ring N	Crowned outer ring N	N-m	g (approx)
6	CFH 6	CFH 6UU	CFH 6R	CFH 6UUR	16	11	6	M6x1	8	28	16	0.6	4	0.3	0.25	11	3 630	3 630	2 110	25 000	3 430	1 080	3	18.5
	CFH 6V	CFH 6VUU	CFH 6VR	CFH 6VUUR													6 960	8 530	2 110	12 000				
8	CFH 8	CFH 8UU	CFH 8R	CFH 8UUR	19	11	8	M8x1.25	10	32	20	0.6	4	0.3	0.25	13	4 310	4 710	4 710	20 000	4 020	1 370	8	28.5
	CFH 8V	CFH 8VUU	CFH 8VR	CFH 8VUUR													8 130	11 170	4 710	9 000				
10	CFH10	CFH10UU	CFH10R	CFH10UUR	22	12	10	M10x1.25	12	36	23	0.6	4	0.3	0.3	15	5 390	6 860	6 860	17 000	4 700	1 670	15	45
	CFH10V	CFH10VUU	CFH10VR	CFH10VUUR													9 510	14 500	7 450	7 500				
10	CFH10-1	CFH10-1UU	CFH10-1R	CFH10-1UUR	26	12	10	M10x1.25	12	36	23	0.6	4	0.3	0.3	15	5 390	6 860	6 860	17 000	5 490	2 060	15	60
	CFH10-1V	CFH10-1VUU	CFH10-1VR	CFH10-1VUUR													9 510	14 500	7 450	7 500				

* Without seals, suitable for grease lubrication. In case of oil lubrication, up to 130% of this value shall be permissible, and 70% of this value shall apply for types with seals.

OUTER RINGS TOLERANCE (μm)

TYPE	Cylindrical outer ring	Crowned outer ring
CF6	0/-8	0/-50
CF8,CF10,CF10-1	0/-9	0/-50

ACCESSORIES

TYPE	RESIN PLUG	NUT
CF6/CF8/CF10/CF10-1	φ 4 Attached	Attached